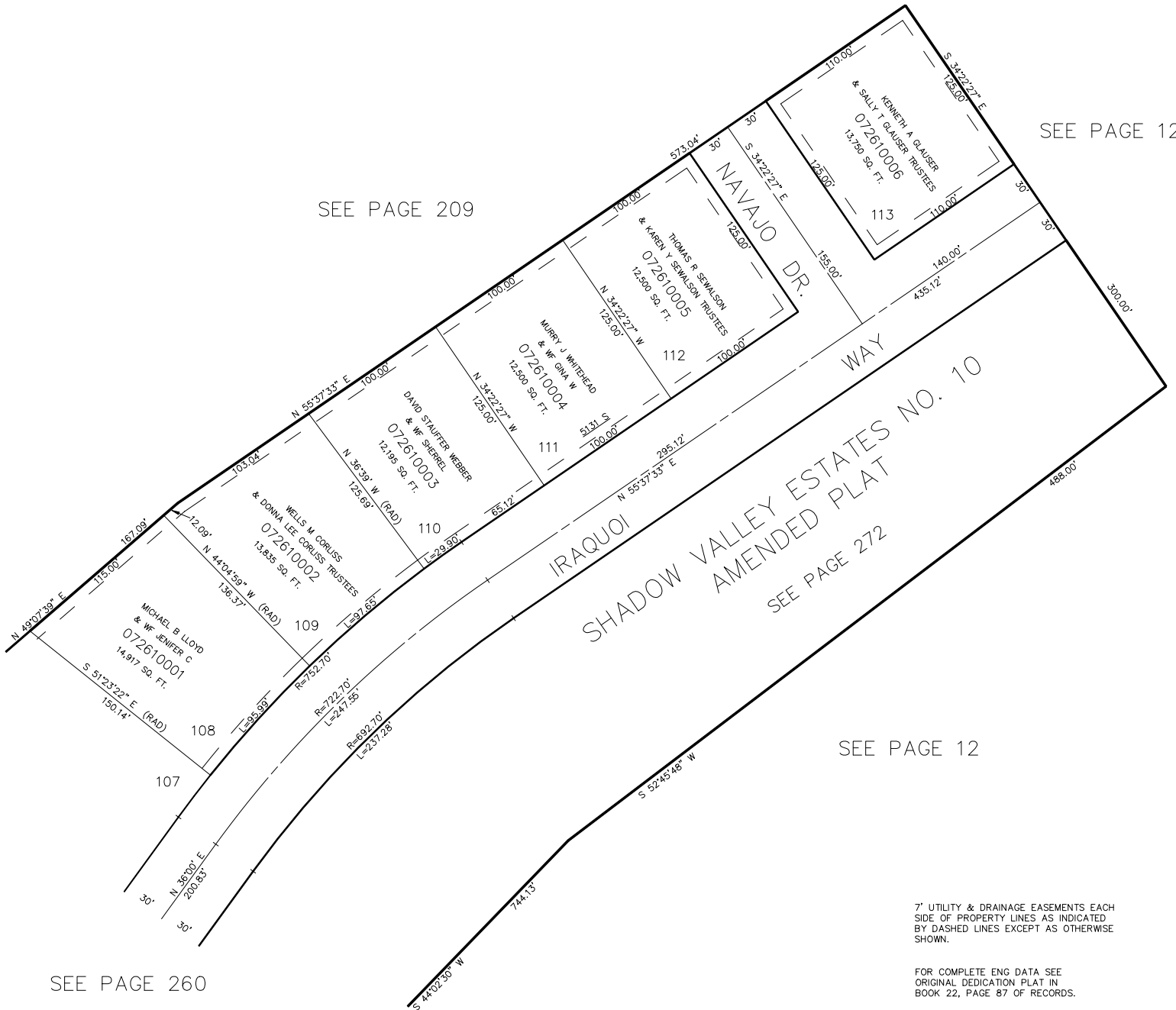


PART OF THE E 1/2 SEC. 15 & N.W. 1/4 SEC. 14, T.5N., R.1W., S.L.B. & M.  
**SHADOW VALLEY ESTATES NO. 10**

LOTS 108 – 113

IN OGDEN CITY  
 SCALE 1" = 50'

TAXING UNIT: 25



SEE PAGE 209

SEE PAGE 12

SHADOW VALLEY ESTATES NO. 10  
 AMENDED PLAT  
 SEE PAGE 272

SEE PAGE 12

SEE PAGE 260

7' UTILITY & DRAINAGE EASEMENTS EACH SIDE OF PROPERTY LINES AS INDICATED BY DASHED LINES EXCEPT AS OTHERWISE SHOWN.

FOR COMPLETE ENG DATA SEE ORIGINAL DEDICATION PLAT IN BOOK 22, PAGE 87 OF RECORDS.